

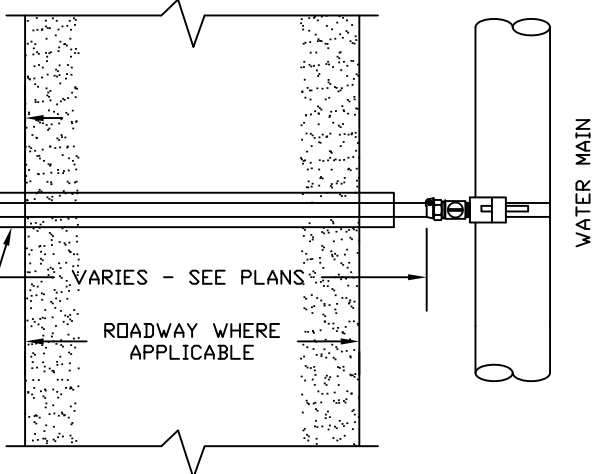
IN AREAS WITH G.C.W.S.D. SEWER, METERS SHOULD BE SET AT OPPOSITE CORNERS FROM SEWER SERVICE LOCATIONS

BY INDIVIDUAL PROPERTY OWNER
BY CONTRACTOR

PROPERTY LINE
R/W

EXTEND 2' BEYOND E.O.P.

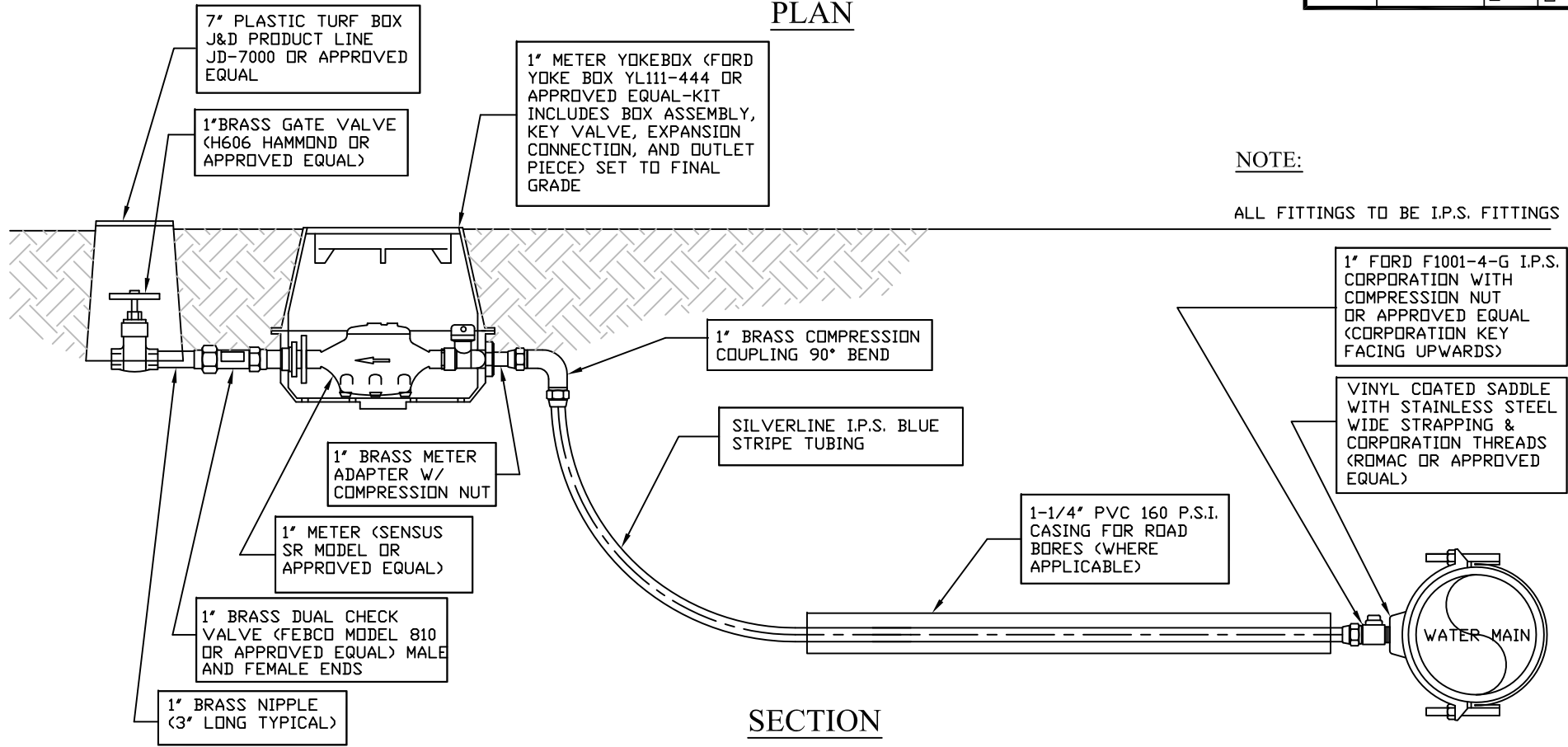
1-1/4" PVC 160 P.S.I. CASING



PLAN

| | | | |
|---|---------|-------|------------------------------|
| GEORGETOWN COUNTY WATER & SEWER DISTRICT | | NO. | 13 - W |
| RESIDENTIAL WATER METER DETAIL - 1" | | SCALE | N.T.S., CHECKED G.L.B. |
| DATE | 4-25-01 | DRAWN | C.L.E. |

NOTE:
ALL FITTINGS TO BE I.P.S. FITTINGS



SECTION

7" PLASTIC TURF BOX
J&D PRODUCT LINE
JD-7000 OR APPROVED
EQUAL

1" BRASS GATE VALVE
(H606 HAMMOND OR
APPROVED EQUAL)

1" METER YOKEBOX (FORD
YOKE BOX YL111-444 OR
APPROVED EQUAL-KIT
INCLUDES BOX ASSEMBLY,
KEY VALVE, EXPANSION
CONNECTION, AND OUTLET
PIECE) SET TO FINAL
GRADE

1" BRASS COMPRESSION
COUPLING 90° BEND

SILVERLINE I.P.S. BLUE
STRIPE TUBING

1" BRASS METER
ADAPTER W/
COMPRESSION NUT

1" METER (SENSUS
SR MODEL OR
APPROVED EQUAL)

1" BRASS DUAL CHECK
VALVE (FBCO MODEL 810
OR APPROVED EQUAL) MALE
AND FEMALE ENDS

1" BRASS NIPPLE
(3' LONG TYPICAL)

1" FORD F1001-4-G I.P.S.
CORPORATION WITH
COMPRESSION NUT
OR APPROVED EQUAL
(CORPORATION KEY
FACING UPWARDS)

VINYL COATED SADDLE
WITH STAINLESS STEEL
WIDE STRAPPING &
CORPORATION THREADS
(ROMAC OR APPROVED
EQUAL)

1-1/4" PVC 160 P.S.I.
CASING FOR ROAD
BORES (WHERE
APPLICABLE)

